

Vorläufige Daten.  
 Caracteristiques  
 provisoires.  
 Tentative data.

# PHILIPS „MINIWATT” KL5

**KL5**

Röhrentype: Endpenthode.

Type de tube: penthode de sortie.

Type of tube: power output pentode.

Heizung dir., Batteriestrom, Parallel-  
 speisung.

Chauffage dir., courant batterie, ali-  
 mentation en parallèle.

Vf 2 V

If 0,1 A

Heating dir., battery current, parallel  
 filament supply.

Kapazitäten.

Capacités.

Capacities.

Capl < 0,6  $\mu$ F

Betriebsdaten als Klasse-A-Endverstärker.

Caracteristiques de service, utilisation comme amplifi-  
 catrice de sortie classe A.

Operating conditions for use as class A power amplifier.

Va	90	135 V
Vg2	90	135 V
Vg1	-4	-6,5 V
Ia	4,8	8,5 mA
Ig2	0,9	1,5 mA
S	1,4	1,7 mA/V
Ri	180000	135000 $\Omega$
Ra	19000	16000 $\Omega$
Wo (dtot = 10%)	0,2	0,52 W
Vi (dtot = 10%)	2,6	4,8 V(eff)
V1 (Wo = 50 mW)	0,7	0,8 V(eff)

Betriebsdaten für 2 Röhren in Gegentaktschaltung.

Caracteristiques de service pour 2 tubes en push-pull.

Operating conditions for 2 tubes in push-pull.

Va	90	135 V
Vg2	90	135 V
Vg1	-8,5	-12 V
Iao	2 x 1	2 x 2 mA
Ia max	2 x 3,6	2 x 6,25 mA
Ig2o	2 x 0,1	2 x 0,35 mA
Ig2 max	2 x 1,0	2 x 2,4 mA
Ra	25000	25000 $\Omega$
Wo	0,35	1,05 W
Vi	6,5	8,7 V(eff)
dtot	3,8	7 %

Grenzdaten.

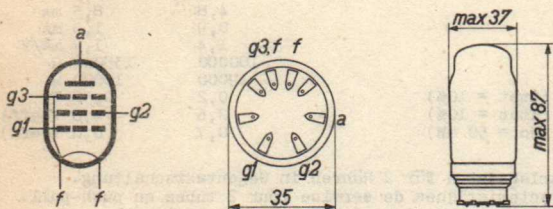
Limites fixes pour les caracteristiques.

Limiting values.

Va	max. 200 V
Wa	max. 2,0 W
Vg2	max. 200 V
Wg2 (Vi = 0)	max. 0,5 W
Wg2 (Wo = max)	max. 1,0 W
Ik	max. 12 mA
Vg1	max. -0,2 V
Rg1	max. 1 M $\Omega$

**KL5****PHILIPS „MINIWATT”  
KL5**Vorläufige Daten  
Caracteristiques  
provisaires  
Tentative data.

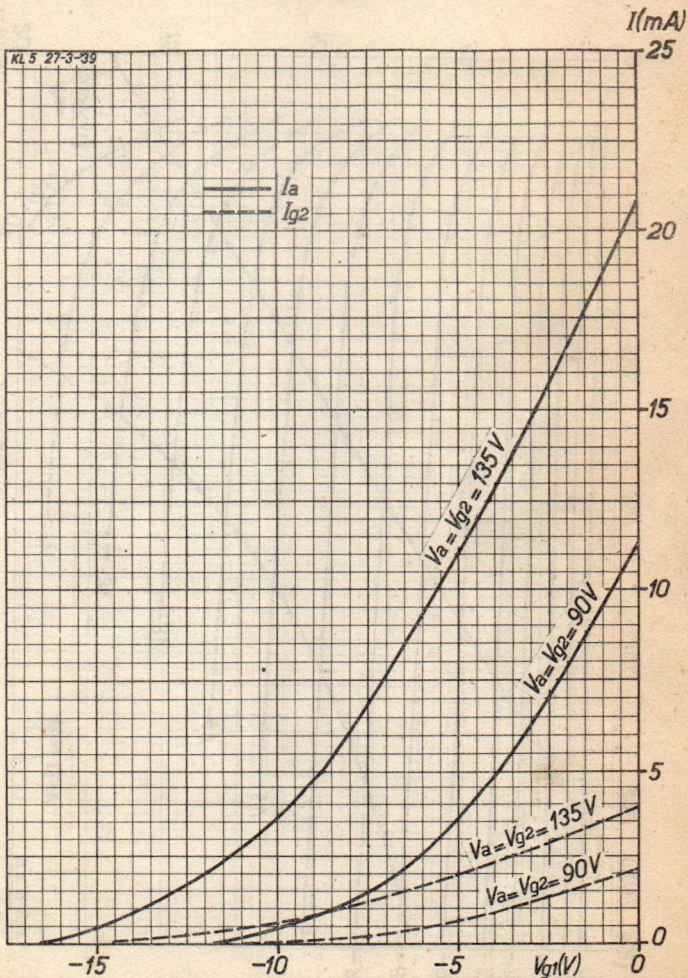
Flektrodenanordnung, Sockelanschlüsse und max. Abmessungen in mm.  
Disposition des électrodes, connexions du culot et dimensions max. en mm.  
Electrode arrangement, base connections and max. dimensions in mm.



# PHILIPS „MINIWATT“

KL5

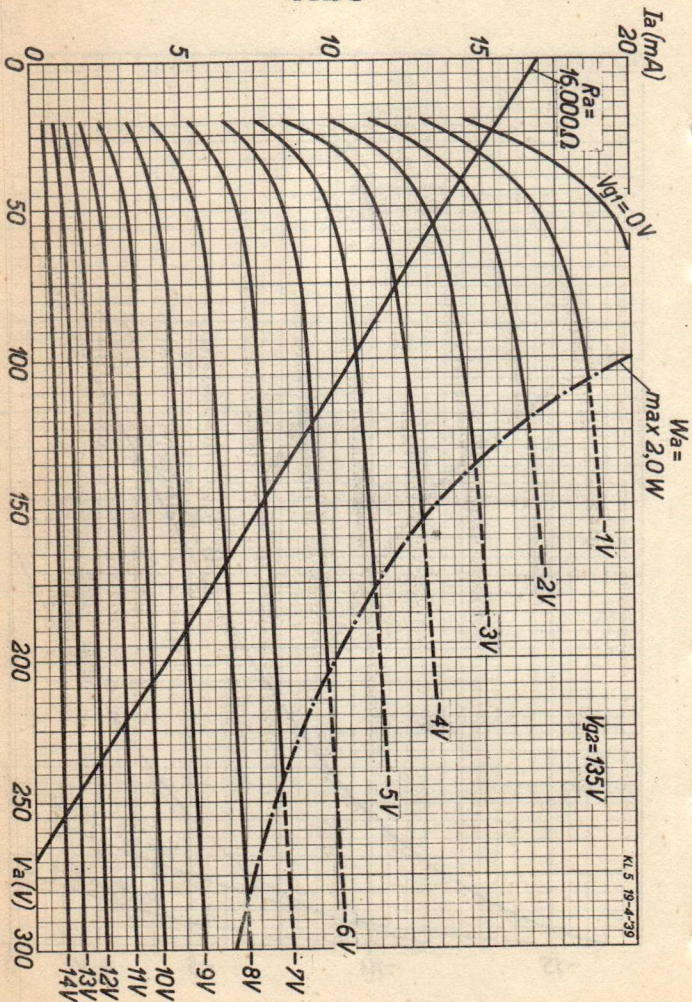
## KL5



KL5

PHILIPS "MINIWATT"

KL5

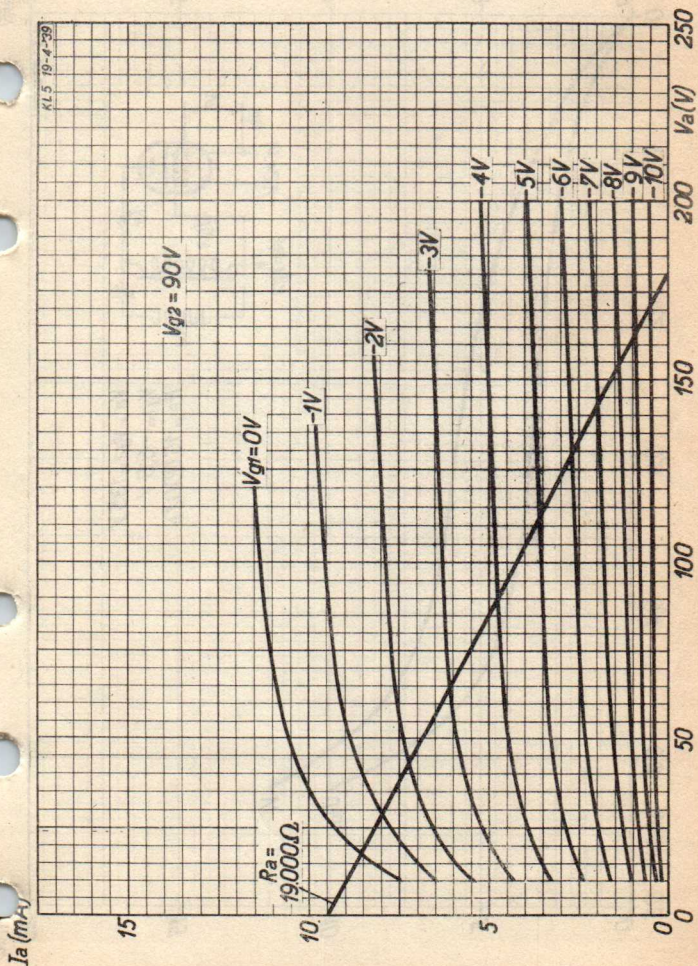


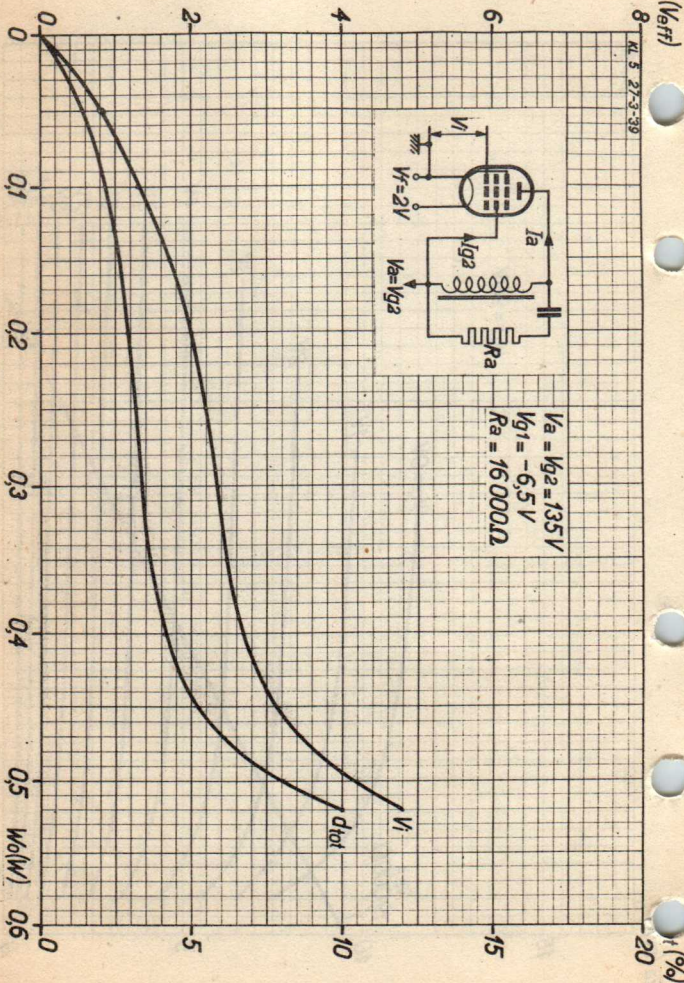
KL 5 19-4-39

# PHILIPS „MINIWATT“

KL5

KL5



**KL5****PHILIPS „MINIWATT“****KL5**

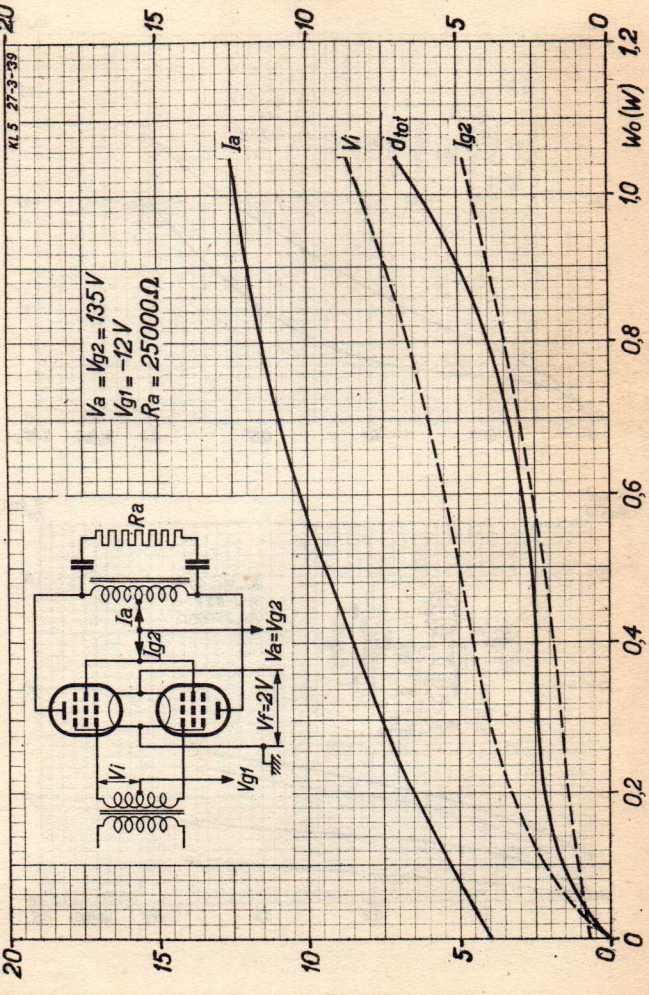
# PHILIPS „MINIWATT“

## KL5

### KL5

$I_a$  (mA)  
 $I_{g2}$

KL5 27-3-39



$V_i$  (V)  
 $d_{tot}$  (%)

KL5

PHILIPS „MINIWATT“

KL5

