

E I M A C
 Division of Varian
 SAN CARLOS
 CALIFORNIA

4CN15A

**CERAMIC
 POWER TETRODE**

The Eimac 4CN15A is a coolerless version of the 4CX300A tetrode intended for use in low duty or pulse service. It is electrically identical to the 4CX300A with the exception of plate dissipation which is rated at 15 watts in air. Where other cooling means are used, such as liquid immersion, plate dissipation is limited only by the maximum allowable anode and seal temperatures.

GENERAL CHARACTERISTICS

ELECTRICAL

Cathode:	Oxide-Coated, Unipotential	Min.	Nom.	Max.	
	Heating Time - - - - -	30	60		seconds
	Cathode-to-Heater Potential - - - - -			±150	volts
Heater:	Voltage - - - - -		6.0		volts
	Current - - - - -	2.6		3.1	amperes
	Amplification Factor (Grid to Screen) - - - - -	4.0		5.6	
	Transconductance (I _b = 200 ma) - - - - -	12,000			umhos
Direct Interelectrode Capacitances, Grounded Cathode:					
	Input - - - - -	25		33	uuf
	Output - - - - -	3.5		4.5	uuf
	Feedback - - - - -			0.06	uuf
	Frequency for Maximum Ratings - - - - -			500	Mc



MECHANICAL

Base - - - - -	Special, breechblock terminal surfaces
Recommended Socket - - - - -	Eimac SK-700 series
Operating Position - - - - -	Any
Maximum Operating Temperatures:	
Ceramic-to-Metal Seals - - - - -	250° C
Anode Core - - - - -	250° C
Cooling - - - - -	Convection or conduction
Maximum Over-all Dimensions:	
Height - - - - -	2.5 inches
Diameter - - - - -	inches
Net Weight - - - - -	2.5 ounces
Shipping Weight - - - - -	1 pound

MAXIMUM CW RATINGS

	Class-C FM or Teleg	Class-C Plate Mod	Class-AB		
DC PLATE VOLTAGE - - - - -	2000	1500	2500*	MAX.	VOLTS
DC PLATE CURRENT - - - - -	250	200	250	MAX.	MA
DC SCREEN VOLTAGE - - - - -	300	300	400	MAX.	VOLTS
DC GRID VOLTAGE - - - - -	-250	-250	---	MAX.	VOLTS
PLATE DISSIPATION - - - - -	15**	10**	15**	MAX.	WATTS
SCREEN DISSIPATION - - - - -	12	12	12	MAX.	WATTS
GRID DISSIPATION - - - - -	2	2	2	MAX.	WATTS

*Up to 250 Mc.

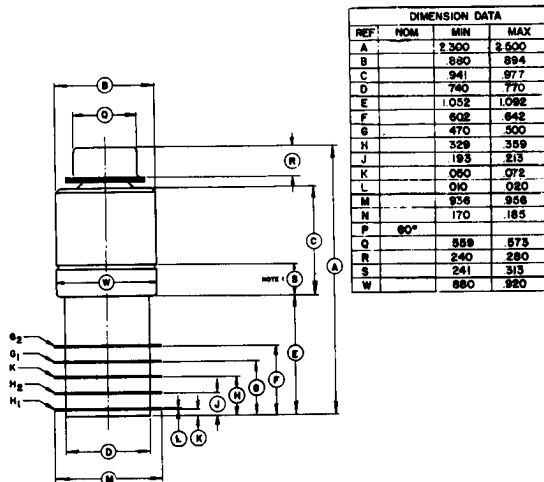
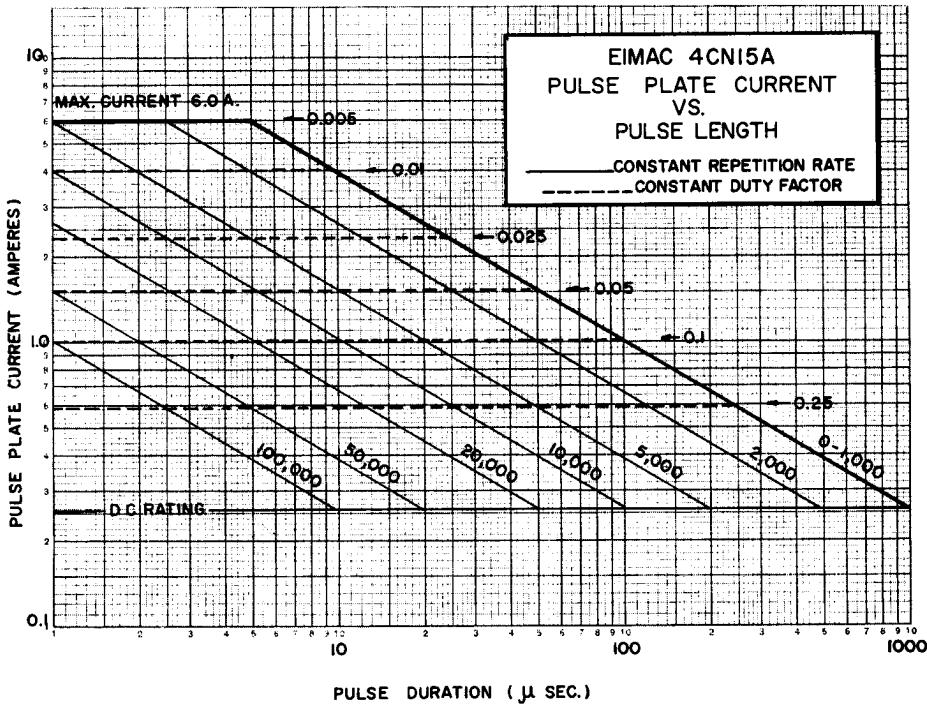
**Rating in air - may be increased with adequate cooling.

MAXIMUM PULSE RATINGS

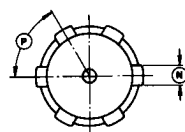
	Class-C Grid Pulsed	Class-C Plate Pulsed	Pulse Modulator		
DC PLATE VOLTAGE - - - - -	2500	7000 (pulsed)	4000	MAX.	VOLTS
PEAK PLATE CURRENT (DC Component) - - -	6.0*	6.0*	6.0*	MAX.	AMPS
DC GRID VOLTAGE- - - - -	-300	-500	-300	MAX.	VOLTS
DC SCREEN VOLTAGE- - - - -	750	1500 (pulsed)	750	MAX.	VOLTS
PLATE DISSIPATION (AVG)** - - - - -	15	15	15	MAX.	WATTS
SCREEN DISSIPATION (AVG) - - - - -	12	12	12	MAX.	WATTS
GRID DISSIPATION (AVG) - - - - -	2	2	2	MAX.	WATTS

*According to table below.

**Depends on cooling method.



NOTE: These dimensions reflect standard manufacturing tolerances. Where they are to be made the basis of purchase specifications, they should first be checked with the factory.



NOTES:
1. DO NOT CONTACT THIS SURFACE.
2. DIMENSIONS IN INCHES.