



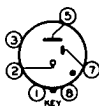
0A4-G

GAS-TRIODE

COLD-CATHODE STARTER-ANODE TYPE

0A4-G

Maximum Overall Length	4-1/8"
Maximum Diameter	1-9/16"
Bulb	ST-12
Base	Small Shell Octal 6-Pin
Pin 1 - No Connection	Pin 5 - Anode
Pin 2 - Cathode	Pin 7 - Starter-Anode
Pin 3 - No Connection	Pin 8 - No Connection



BOTTOM VIEW

CHARACTERISTICS

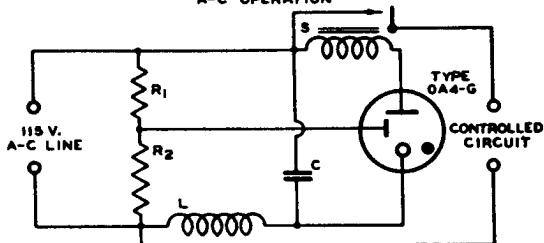
Peak Anode Breakdown Voltage (Starter anode tied to cathode)	225 min. volts
Peak Positive Starter-Anode Breakdown Voltage	{ 70 min. volts 90 max. volts
Starter-Anode Current (For transition of discharge to anode at 140 volts peak)	100 max. μ amp.
Starter-Anode Drop	60 approx. volts
Anode Drop	70 approx. volts

MAXIMUM RATINGS and TYPICAL OPERATING CONDITIONS

Relay Service

Peak Cathode Current	100 max. ma.
D-C Cathode Current	25 max. ma.
Typical Operation with A-C Supply:	
Anode-Supply Voltage (RMS)	105 - 130 volts
A-C Starter-Anode Voltage (peak)	70 max. volts
R-F Starter-Anode Voltage (peak)	55 min. volts
Sum of A-C and R-F Starter-Anode Voltages (peak)	110 min. volts

**SCHEMATIC RELAY CIRCUIT USING TYPE 0A4-G
A-C OPERATION**



C } = HIGH-Q TUNED CIRCUIT FOR R-F SIGNAL
L }

R₁ = 15000 OHMS (1/2 WATT)

R₂ = 10000 OHMS (1/2 WATT)

S = RELAY - CHOSEN FOR DESIGN REQUIREMENTS

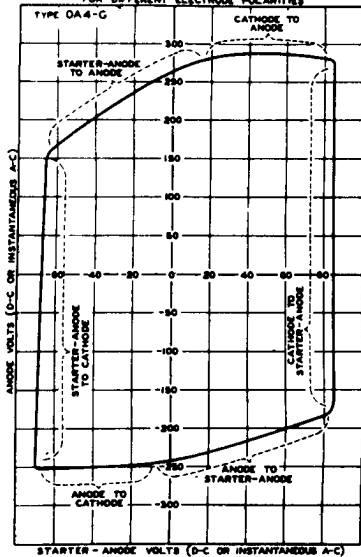
The license extended to the purchaser of tubes appears in the License Notice accompanying them. Information contained herein is furnished without assuming any obligations.

0A4-G

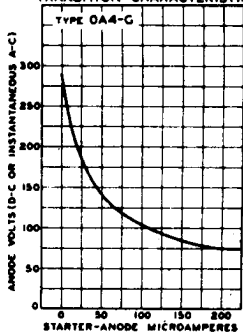


0A4-G GAS-TRIODE

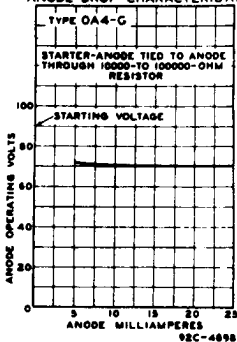
TYPICAL BREAKDOWN CHARACTERISTICS
FOR DIFFERENT ELECTRODE POLARITIES



AVERAGE
TRANSITION CHARACTERISTIC



AVERAGE
ANODE-DROP CHARACTERISTIC



APRIL 20, 1938

RCA RADIOTRON DIVISION
RCA MANUFACTURING COMPANY, INC.

92C-4897,
4898, 4899