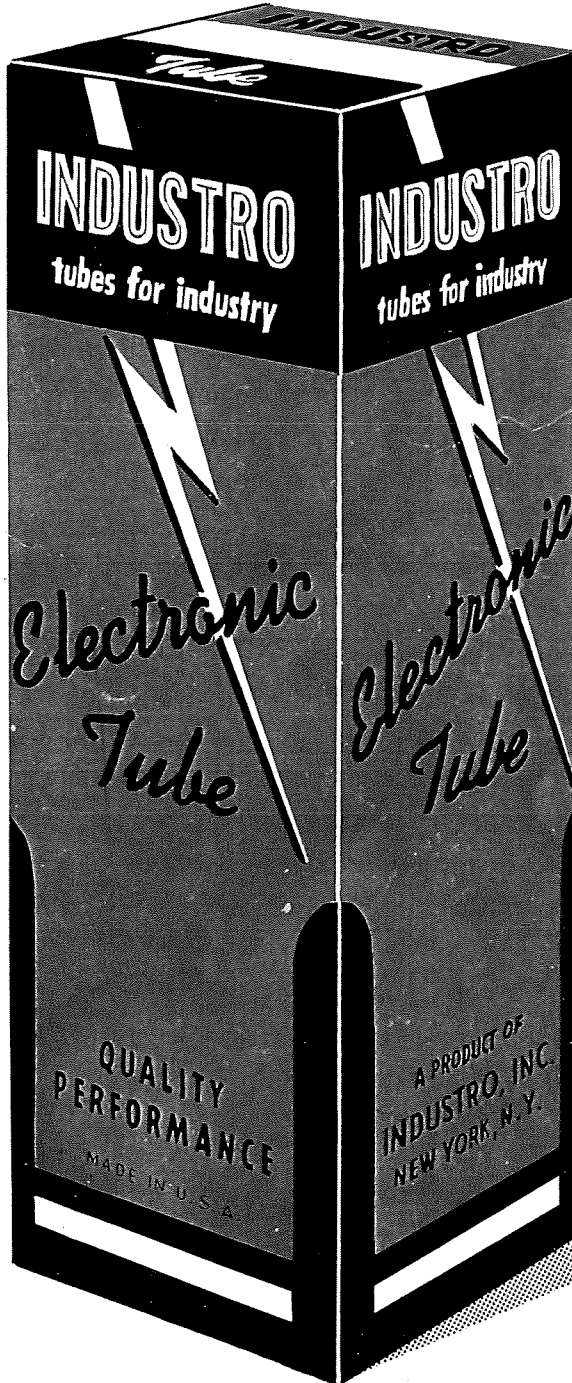


SPECIAL PURPOSE ELECTRON TUBES



EXCLUSIVE REPRESENTATION
BENELUX AND BELGIAN CONGO
ETABLISSEMENTS HALFIN
11-13 RUE DU CANAL
BRUSSELS, BELGIUM

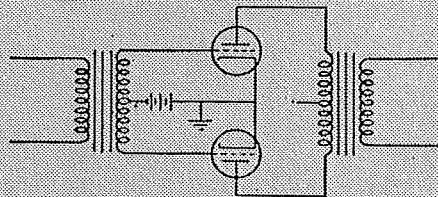
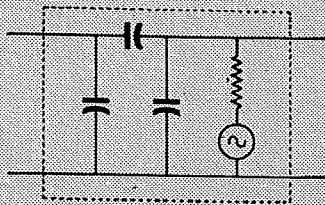
av.
50 lx

INDUSTRO

"tubes for industry"

INDUSTRO, INC. 649 BROADWAY, NEW YORK 12, N. Y.

OREGON 7-8400
CABLE: INDUSTROIN



For many years INDUSTRO, Inc. has been a leading pioneer in the field of electronics. INDUSTRO electronic tubes are in use by many government agencies, as well as industrial research and development firms, and manufacturers in the United States and abroad.

Time and time again, INDUSTRO has been called upon to supply electronic tubes for critical and specific applications in the industrial field. With such experience and know-how gained, INDUSTRO now offers one of the leading and most varied lines of governmental and industrial electronic tubes.

The products listed in this catalogue are of the highest quality, and are manufactured and tested to assure best performance and dependability. This INDUSTRO electronic tube catalogue lists many of the types carried by your INDUSTRO distributor.

In addition to the catalogue items, your INDUSTRO distributor can supply you with information, prices and delivery on many additional types of industrial tubes, as well as:

- TRANSISTORS
- CRYSTALS
- RECEIVING TUBES

For all your electronic tube requirements, contact your local INDUSTRO distributor or sales engineer.

INDUSTRO

"tubes for industry"

INDUSTRO, INC. 649 BROADWAY, NEW YORK 12, N. Y.

OREGON 7-8400
CABLE: INDUSTROIN

INDUSTRO TUBES

TYPE	DESCRIPTION	CODE	LIST	TYPE
OA2	Miniature Voltage Regulator	D-2	1.45	OA2
OA3/VR75	Voltage Regulator	D-2	1.80	OA3/VR75
OA4G	Glow-Discharge Triode	D-2	1.45	OA4G
OB2	Miniature Voltage Regulator	D-2	1.39	OB2
OB3/VR90	Voltage Regulator	D-2	1.65	OB3/VR90
OC3/VR105	Voltage Regulator	D-2	1.32	OC3/VR105
OC3W	Ruggedized Voltage Regulator	I-2	4.50	OC3W
OD3/VR150	Voltage Regulator	D-2	1.32	OD3/VR150
OD3W	Ruggedized Voltage Regulator	D-2	4.50	OD3W
OZ4A/CK1003	Duodiode Gaseous Rectifier	D-11	1.30	OZ4A/CK1003
1B21A	TR Tube	U-8	35.00	1B21A
1B22	Spark Gap Diode Modulator	C-8	16.00	1B22
1B23	TR, Glass envelope Fixed-Tuned	S-8	32.32	1B23
1B24	TR Tube	O-8	32.00	1B24
1B24A	TR, Integral Cavity, Tunable	D-8	33.90	1B24A
1B26	TR, Integral Cavity, Tunable	U-8	65.00	1B26
1B27	TR, Glass envelope, Tunable	D-8	40.00	1B27
1B29	Gas Switching Tube	O-8	16.00	1B29
1B32	Diode Gas Discharge Tube	O-8	16.00	1B32
1B35	ATR, Fixed-Tuned, Low Q	D-8	7.85	1B35
1B35A	ATR Tube	D-8	7.95	1B35A
1B36	ATR, Fixed-Tuned, Low Q	D-8	15.50	1B36
1B37	ATR, Fixed-Tuned, Low Q	D-8	***	1B37
1B37A	ATR, Fixed-Tuned, Low Q	D-8	***	1B37A
1B38	PRE - TR	D-8	56.00	1B38
1B40	TR, - Fixed-Tuned, Electrodeless Discharge	D-8	4.70	1B40
1B41	Spark Gap Modulator	D-8	62.00	1B41
1B42	Mercury Cathode Series Gap	D-8	24.00	1B42
1B44	ATR, Fixed-Tuned, Low Q	D-8	35.95	1B44
1B45	Spark Gap Modulator	D-8	52.00	1B45
1B47	Miniature Voltage Regulator	D-8	16.00	1B47
1B50	TR, Integral Cavity, Tunable	D-8	71.00	1B50
1B51	ATR, Fixed-Tuned, Low Q	D-8	20.00	1B51
1B52	ATR, Fixed-Tuned, Low Q	D-8	41.75	1B52
1B53	ATR, Fixed-Tuned, Low Q	D-8	41.75	1B53
1B54	PRE - TR	D-8	71.00	1B54
1B55	TR, Band Pass	D-8	220.00	1B55
1B56	ATR, Fixed-Tuned, Low Q	D-8	41.75	1B56
1B57	ATR, Fixed-Tuned, Low Q	D-8	41.75	1B57
1B58	TR, Band Pass	D-8	133.00	1B58
1B59	Glow Modulator Tube	D-6	20.00	1B59
1B60	Lighter Version of 1B24	D-8	93.45	1B60
1B62	Modified 721B	D-8	27.50	1B62
1B63A	TR Tube	D-8	41.00	1B63A
1B63B	TR-Band Pass, Fixed-Tuned, Long Life	D-8	***	1B63B
1C21	Cold Cathode Gas Triode	S-11	2.85	1C21
1P21	Multiplier Phototube, High Sensitivity Type	D-4	50.00	1P21
1P23	Gas Phototube	D-8	5.00	1P23

INDUSTRO TUBES

TYPE	DESCRIPTION	CODE	LIST	TYPE
1P28	Multiplier Phototube, High Sensitivity Type	D-8	21.00	1P28
1P30	Gas Phototube	D-8	6.50	1P30
1P32	Gas Phototube	D-8	5.00	1P32
1P36	Gas Phototube	D-8	5.50	1P36
1P39	Vacuum Phototube, Blue-Sensitive Type	D-8	2.50	1P39
1P40	Gas Phototube, Red-Sensitive Type	D-8	2.60	1P40
1P41	Gas Phototube, Red-Sensitive Type	D-8	2.80	1P41
1Q22	Reference Cavities	D-8	125.00	1Q22
1Q23	Reference Cavities	D-8	125.00	1Q23
1Y2	High Voltage Half Wave Rectifier	I-8	7.50	1Y2
1Z2	Vacuum Rectifier	I-8	4.25	1Z2
2A4G	Thyratron	I-8	2.35	2A4G
2AC15	Diode Rectifier	D-11	7.50	2AC15
2AS15	Diode Rectifier	D-11	7.50	2AS15
2B4	Gas Triode	D-10	4.50	2B4
2B22	Receiving Diode UHF Detector	T-8	21.00	2B22
2C21/1642	Twin Triode	I-8	2.05	2C21/1642
2C22	HF Triode Amplifier	D-8	1.60	2C22
2C23	Triode Amplifier	S-8	4.00	2C23
2C26	UHF Triode	O-8	6.95	2C26
2C26A	UHF Triode	O-8	7.50	2C26A
2C33	Thyratron	D-8	4.50	2C33
2C34	Twin Triode	S-8	3.50	2C34
2C39	UHF Power Triode	S-4	22.00	2C39
2C39A	UHF Power Triode	D-4	24.00	2C39A
2C40	UHF Triode	I-8	26.00	2C40
2C43	UHF Triode Amplifier	D-8	23.50	2C43
2C44	UHF Triode Amplifier	N-8	17.00	2C44
2C45	Transmitting Triode	C-8	5.00	2C45
2C46	UHF Triode Amplifier	I-8	20.00	2C46
2C51	Twin Triode	D-11	6.90	2C51
2C51W	Ruggedized 2C51	D-11	7.50	2C51W
2C53	High Voltage Triode	D-11	17.50	2C53
2D21	Xenon Shield Grid Thyratron	I-8	2.75	2D21
2D21W	2D21 Ruggedized Tube	I-8	3.00	2D21W
2E22	Transmitting Pentode	I-8	6.00	2E22
2E24	VHF Beam Power Amplifier	S-8	4.60	2E24
2J21	Magnetron	T-3	140.00	2J21
2J21A	Magnetron	T-3	150.00	2J21A
2J22	Magnetron	U-3	125.00	2J22
2J26	Magnetron	O-3	185.00	2J26
2J27	Magnetron	O-3	185.00	2J27
2J29	Magnetron	T-3	450.00	2J29
2J30	Magnetron	D-3	140.00	2J30
2J31	Magnetron	C-3	140.00	2J31
2J32	Magnetron	C-3	140.00	2J32
2J33	Magnetron	S-3	140.00	2J33
2J34	Magnetron	S-3	140.00	2J34
2J36	Magnetron	S-3	150.00	2J36

INDUSTRO TUBES

TYPE	DESCRIPTION	CODE	LIST	TYPE
2J37	Magnetron	C-3	185.00	2J37
2J38	Magnetron	C-3	140.00	2J38
2J39	Magnetron	U-3	140.00	2J39
2J40	Magnetron	S-3	140.00	2J40
2J42	Magnetron	D-2	175.00	2J42
2J42A	Magnetron	D-2	***	2J42A
2J48	Magnetron	D-2	250.00	2J48
2J55	Magnetron	S-3	165.00	2J55
2J61	Magnetron	N-3	450.00	2J61
2J62	Magnetron	N-3	450.00	2J62
2K22	Klystron	D-3	55.00	2K22
2K23	Klystron	D-3	55.00	2K23
2K25	Klystron	I-3	41.00	2K25
2K33A	Klystron	O-9	370.00	2K33A
2K50	Klystron	D-11	425.00	2K50
2K54	Klystron	U-3	200.00	2K54
2K55	Klystron	U-3	200.00	2K55
2SM15	Diode Rectifier	D-8	7.50	2SM15
2V3G	Diode Vacuum Rectifier	S-8	2.90	2V3G
2X2	Diode Vacuum Rectifier	C-8	1.70	2X2
2X2-A	Diode Vacuum Rectifier	I-8	1.98	2X2-A
2-250A	Diode Rectifier	S-8	21.00	2-250A
3A4	Miniature Pentode Amplifier	D-8	1.20	3A4
3A5	Miniature Twin Triode	I-8	1.20	3A5
3B4	Power Pentode	I-8	2.75	3B4
3B21	Duodiode Gas Rectifier	D-8	13.35	3B21
3B22	Duodiode Gas Rectifier	D-8	7.40	3B22
3B23	Duodiode Vacuum Rectifier	D-8	***	3B23
3B24	Diode Vacuum Rectifier	C-3	10.00	3B24
3B24W	Ruggedized 3B24	D-3	12.75	3B24W
3B25	Xenon Half Wave Rectifier	D-8	6.75	3B25
3B26	Special Purpose Diode	S-3	18.00	3B26
3B27	High Voltage - Half Wave Rectifier	S-11	10.00	3B27
3B28	Xenon Half Wave Rectifier	S-8	7.00	3B28
3B29	High Vacuum Clipper Diode	D-3	18.00	3B29
3C23	Argon Thyatron	I-6	6.99	3C23
3C24	UHF Triode	O-8	8.70	3C24
3C27	Triode UHF Oscillator	U-8	16.00	3C27
3C28	HF Triode Amplifier	S-8	9.50	3C28
3C31	Thyatron	D-8	9.60	3C31
3C33	Power Amplifier	D-8	24.00	3C33
3C45	Hydrogen Thyatron	C-6	17.80	3C45
3D21A	Tetrode Modulator	I-11	11.75	3D21A
3E29	Beam Power Amplifier, Twin Type	D-8	20.25	3E29
4B22	Duodiode Gas Rectifier	D-11	26.95	4B22
4B23	Duodiode Gas Rectifier	D-11	29.00	4B23
4B24	Duodiode Gas Rectifier	D-11	8.90	4B24
4B25	Duodiode Gas Rectifier	D-11	16.60	4B25
4B26	Diode Gas Rectifier	D-11	10.00	4B26
4B28	Diode Gas Rectifier	I-11	6.00	4B28

INDUSTRO TUBES

TYPE	DESCRIPTION	CODE	LIST	TYPE
4B32	Xenon Half Wave Rectifier	I-11	14.00	4B32
4C21	Triode Amplifier Oscillator	U-8	15.00	4C21
4C27	Transmitting Triode	S-6	48.00	4C27
4C28	Transmitting Triode	S-6	59.75	4C28
4C30	UHF Triode Amplifier	O-8	16.00	4C30
4C35	Hydrogen Thyatron	D-11	27.00	4C35
4D21	UHF Oscillator Amplifier	D-11	30.00	4D21
4E27	Transmitting Pentode	D-4	30.00	4E27
4J34	Magnetron	S-3	200.00	4J34
4J38	Magnetron	S-3	275.00	4J38
4J42	Magnetron	C-3	250.00	4J42
4J52	Magnetron with Integral Magnet	D-8	300.00	4J52
4-250A	Tetrode UHF Amplifier Oscillator	D-10	50.00	4-250A
4-400A	Forced Air Cooled Tetrode	D-10	70.00	4-400A
5A6	RF Power Amplifier	S-10	5.30	5A6
5C21	Thyatron	S-11	29.30	5C21
5C22	Hydrogen Thyatron	D-11	48.75	5C22
5C30	Thyatron	C-11	21.00	5C30
5C37	UHF Triode	C-6	20.00	5C37
5D21	Selected Tube 715B	C-6	59.00	5D21
5D22	Tetrode UHF Amplifier Oscillator	D-10	50.00	5D22
5D23	Tetrode Power Amplifier	I-3	45.00	5D23
5DC5	Diode Rectifier	D-8	7.50	5DC5
5DC5-M	Diode Rectifier	D-8	7.50	5DC5-M
C5F14	Thyatron	I-11	49.00	C5F14
5J23	Magnetron	O-3	380.00	5J23
5J29	Magnetron	U-3	380.00	5J29
5J30	Magnetron	O-3	380.00	5J30
5J33	Magnetron	U-3	360.00	5J33
5R4GY	Duodiode Rectifier	D-11	2.00	5R4GY
5R4WGY	5R4GY Ruggedized Tube	D-8	5.90	5R4WGY
6AJ5	UHF Pentode Amplifier	I-8	3.40	6AJ5
6AK5W	UHF Pentode Amplifier	S-8	3.30	6AK5W
6AL5W	6AL5 Ruggedized Tube	D-8	2.00	6AL5W
6AQ5W	Beam Power Amplifier Tetrode	I-8	4.25	6AQ5W
6AR6	Tetrode Power Amplifier	S-8	5.40	6AR6
6AS6	Pentode Amplifier	I-8	3.43	6AS6
6AS6W	Ruggedized 6AS6	D-11	4.75	6AS6W
6AU6WA	Ruggedized 6AU6	S-8	3.50	6AU6WA
6BA6W	Ruggedized 6BA6	D-8	3.00	6BA6W
6BE6W	Ruggedized 6BE6	D-8	3.50	6BE6W
6F4	Acorn - UHF Triode Oscillator	I-8	6.80	6F4
6H6WGT	Ruggedized 6H6WGT	I-8	5.40	6H6WGT
6J4	Miniature Triode	I-8	7.95	6J4
6J4WA	Ruggedized 6J4	I-8	8.50	6J4WA
6J6W	Ruggedized 6J6W	S-8	2.90	6J6W
6J6WA	Improved Ruggedized 6J6W	S-8	7.50	6J6WA
6L6WGB	Ruggedized Beam Power Pentode	S-11	4.50	6L6WGB
6Q5G	Gas Triode	D-11	4.50	6Q5G
6SL7WGT	Ruggedized 6SL7GT	I-11	3.00	6SL7WGT

INDUSTRO TUBES

TYPE	DESCRIPTION	CODE	LIST	TYPE
6SU7GT	Selected 6SL7GT - Micanol Base	I-8	4.25	6SU7GT
7C30	Transmitting, Forced Air Cooled Triode	I-3	250.00	7C30
8DC15	Diode Rectifier	D-11	7.50	8DC15
12A6	Pentode Power Amplifier	I-8	1.63	12A6
12AT7WA	Ruggedized 12AT7	D-8	5.50	12AT7WA
12AY7	Twin Triode	I-8	2.90	12AY7
12K8Y	Triode Hexode Converter	I-8	1.75	12K8Y
12L8GT	Twin Pentode Power Amplifier	S-8	2.25	12L8GT
25Z6WGT	Duodiode Rectifier Doubler	I-11	6.00	25Z6WGT
28D7	Double Beam Power Amplifier	I-8	2.75	28D7
1C	Duodiode Gas Rectifier	C-11	7.60	1C
BS1	Geiger Counter	D-11	45.00	BS1
C1A	Grid Control Rectifier	I-11	12.50	C1A
C1B	Grid Control Rectifier	D-11	13.25	C1B
TGC-1	G-M Tube	D-11	72.50	TGC-1
TE-2	Full Wave Rectifier	D-11	18.00	TE-2
TGC-2	G-M Tube	D-11	89.16	TGC-2
3B	Rectifier	C-11	10.00	3B
3C	Duodiode Gas Rectifier	I-11	8.90	3C
3CF	Full Wave Rectifier	D-11	11.00	3CF
TE-3	Full Wave Rectifier	D-11	17.50	TE-3
TGC-3	G-M Tube	D-11	158.00	TGC-3
TGC-3NA	G-M Tube	D-11	92.00	TGC-3NA
KC4	High Voltage Rectifier	C-3	210.00	KC4
TGC-4	G-M Tube	D-11	27.00	TGC-4
TGC-4A	G-M Tube	D-11	23.50	TGC-4A
C5B	Grid Control Rectifier	S11	21.00	C5B
TGC-5	G-M Tube	D-11	29.00	TGC-5
TGC-5A	G-M Tube	D-11	27.00	TGC-5A
TT-5	Chronotron	D-11	61.75	TT-5
6C	Duodiode Gas Rectifier	D-11	20.00	6C
6CF	Full Wave Rectifier	D-11	20.00	6CF
C6A	Grid Control Rectifier	D-6	31.15	C6A
C6J	Thyratron	I-8	29.50	C6J
C6J/A	Improved C6J	D-11	36.00	C6J/A
C6L	Grid Control Rectifier	D-11	36.00	C6L
C6M	Grid Control Rectifier	D-11	36.00	C6M
TD-6	Cold Cathode Gas Triode	D-11	7.00	TD-6
TGC-6	G-M Tube	D-11	21.00	TGC-6
TT-6	Chronotron	D-11	61.75	TT-6
TD-7	Cold Cathode Gas Triode	D-11	7.00	TD-7
TGC-7	G-M Tube	D-11	275.00	TGC-7
TD-8	Cold Cathode Half Wave Rectifier	D-11	36.75	TD-8
TGC-8	G-M Tube	D-11	156.00	TGC-8
TT-8	Chronotron	D-11	61.75	TT-8
TE-9	Twin Triode	D-11	9.25	TE-9
TT-9	Chronotron	D-11	61.75	TT-9
10Y	Triode Amplifier - Oscillator	C-8	3.40	10Y
TT-10	Chronotron	D-11	61.75	TT-10
TGC-10A	G-M Tube	D-11	193.00	TGC-10A

INDUSTRO TUBES

TYPE	DESCRIPTION	CODE	LIST	TYPE
TGC-11A	G-M Tube	D-11	275.00	TGC-11A
TT-12	Convectron	D-11	61.10	TT-12
TT-13	Chronotron	D-11	61.75	TT-13
TT-14	Chronotron	D-11	61.75	TT-14
BL-15	ATR, Fixed-Tuned, Low Q	D-8	83.50	BL-15
TT-15	Chronotron	D-11	61.75	TT-15
15E	UHF Triode Amplifier	N-8	16.00	15E
15R	Diode Vacuum Rectifier	T-8	25.00	15R
BL-16	TR, Integral Cavity, Tunable	D-8	208.25	BL-16
TE-16	Twin Triode	D-11	9.25	TE-16
TGC-16	G-M Tube	D-11	67.00	TGC-16
FG-17	Mercury Thyatron	I-11	8.40	FG-17
BL-18	TR Tube, Tunable	D-6	955.00	BL-18
TT-18	Chronotron	D-11	61.75	TT-18
TT-19	Chronotron	D-11	61.75	TT-19
TT-20	Chronotron	D-11	61.75	TT-20
BL-22	TR, Integral Cavity, Tunable Reservoirless	D-8	41.75	BL-22
TT-22	Chronotron	D-11	61.75	TT-22
KU-23	Triode Amplifier	D-11	130.00	KU-23
TT-23	Chronohm	D-11	68.25	TT-23
HK-24	Triode Amplifier	S-8	10.00	HK-24
HK-24G	UHF Triode	S-8	9.00	HK-24G
TT-24	Chronohm	D-11	82.75	TT-24
BL-25	TR, Glass Envelope, Tunable	D-8	50.00	BL-25
25T	Triode Amplifier	S-8	10.00	25T
25TG	UHF Triode	C-8	9.00	25TG
QK26	Klystron	O-8	65.00	QK26
TE-26	Subminiature Filamentary Diode	D-11	6.50	TE-26
TT-26	Convectron	D-11	57.75	TT-26
BL-27	TR - Dual 1B63A	D-8	250.00	BL-27
FG-27A	Thyatron	S-8	24.00	FG-27A
RK28A	Power Pentode	U-8	23.00	RK28A
BL-29	Cross Guide Duplexer	D-8	268.75	BL-29
30SPEC	Triode Amplifier	S-8	2.00	30SPEC
30G	Radiation Counter	D-11	10.00	30G
30M	Radiation Counter	D-11	30.00	30M
30R	Voltage Regulator	D-11	15.00	30R
30RS	Voltage Regulator	D-11	15.00	30RS
BL-30	TR - No Reservoir	D-8	78.13	BL-30
RK30	Power Triode	S-8	9.90	RK30
BL-31	Ruggedized 1B27 without Tuner Knob	D-8	50.00	BL-31
BL-32	TR Tube	D-8	58.30	BL-32
FG-32	Diode Gas Rectifier	I-8	14.90	FG-32
32G	Radiation Counter	D-11	10.80	32G
32TG	Radiation Counter	D-11	22.50	32TG
RK34	Twin Triode	S-8	3.40	RK34
BL-35	Dual TR Tube	D-8	468.75	BL-35
35TG	Triode Amplifier	S-8	10.00	35TG
QK36	Special Purpose Diode	S-10	18.00	QK36

INDUSTRO TUBES

TYPE	DESCRIPTION	CODE	LIST	TYPE
BL-37	TR - Band Pass, Fixed-Tuned	D-8	1093.00	BL-37
BL-38	ATR-Low Q, Fixed-Tuned	D-8	234.37	BL-38
BL-40	ATR-Version 1B56	D-8	78.13	BL-40
BL-41	ATR-Version 1B44	D-8	78.13	BL-41
BL-43	ATR Tube	D-8	25.00	BL-43
RK44	Power Pentode	S-8	5.80	RK44
BL-45	ATR- 1B35A Outline, Fixed-Tuned	D-8	15.63	BL-45
45SPEC	Transmitting Triode	I-8	2.00	45SPEC
BL-46	TR- Integral Cavity, Tunable	D-8	312.50	BL-46
BL-47	Cross Guide Duplexer	D-8	273.44	BL-47
RK47	Beam Power Amplifier	S-8	12.00	RK47
BL-48	TR Tube	D-8	116.75	BL-48
EF-50	Pentode Amplifier	I-8	4.00	EF-50
QK50	Hydrogen Thyatron	D-11	56.10	QK50
UH-50	UHF Triode Amplifier	I-8	11.00	UH-50
BL-51	TR- Integral Cavity, Tunable	D-8	101.56	BL-51
BL-52	ATR- Fixed Tuned	D-8	54.69	BL-52
BL-53	TR Tube	D-8	291.75	BL-53
53A	UHF Triode Oscillator	S-8	16.00	53A
BL-54	ATR - BL43 for RG51/U Guide	D-8	78.13	BL-54
BL-55	ATR - BL43 for RG51/U Guide	D-8	78.13	BL-55
FG-57	Mercury Vapor Thyatron	D-11	28.00	FG-57
RK57	Power Triode	S-8	16.00	RK57
RK60	Duodiode Vacuum Rectifier	D-11	6.50	RK60
BL-60	TR-Dual 5865	D-8	781.25	BL-60
QK60	Tunable Packaged Magnetron	O-3	300.00	QK60
QK61	Tunable Packaged Magnetron	C-3	300.00	QK61
RK61	Subminiature Thyatron	D-11	3.00	RK61
QK62	Tunable Packaged Magnetron	C-3	300.00	QK62
BL-64	TR Tube	D-8	100.00	BL-64
BL-65	TR Tube - Tunable	D-8	83.50	BL-65
RK65	Tetrode Power Amplifier	S-3	42.00	RK65
BL-66	TR and Shutter Tube	D-8	116.75	BL-66
KT-66	Power Amplifier	D-8	3.75	KT-66
BL-67	TR - 1B26 No Reservoir	D-8	70.31	BL-67
BL-68	ATR - Miniature 1B35A	D-8	23.00	BL-68
BL-69	ATR - Version 5883	D-8	19.52	BL-69
BL-70	ATR - Version 5864	D-8	19.52	BL-70
BL-71	Dual TR Tube	D-8	273.44	BL-71
RK72	HV Diode Vacuum Rectifier	U-3	11.25	RK72
RK73	Diode Rectifier	U-3	12.20	RK73
RK75	Pentode Amplifier	S-8	8.00	RK75
BL-78	TR - 6334 Tapped Flanges both sides	D-8	234.37	BL-78
BL-81	TR - 6334 Plus 1B63A	D-8	625.00	BL-81
FG-81A	Thyatron	C-8	14.00	FG-81A
BL-82	TR-Version 5863	D-8	156.25	BL-82
BL-84	TR-Version 6334	D-8	***	BL-84
BL-86	Dual TR Tube	D-8	781.25	BL-86
BL-87	TR-Dual 1B58	D-8	625.00	BL-87
89Y	Pentode Amplifier	I-8	1.08	89Y

INDUSTRO TUBES

TYPE	DESCRIPTION	CODE	LIST	TYPE
90NB	G-M Tube	D-11	34.00	90NB
BL-94	ATR- 1B37A with KA	D-8	39.06	BL-94
QK95	High Vacuum Clipper Diode	D-11	20.00	QK95
BL-96	Pre TR, Band Pass, Fixed-Tuned	D-8	390.63	BL-96
ML-100	High Voltage Rectifier	S-3	220.00	ML-100
100TH	High Mu Triode	S-11	18.25	100TH
102A	Amplifier	D-11	4.00	102A
BL-105	Pressurizing Window	D-8	28.00	BL-105
105A	Q Voltmeter Tube	D-8	45.00	105A
BL-106	Pressurizing Window	D-8	28.00	BL-106
BL-107	Pressurizing Window	D-8	13.50	BL-107
BL-112	Pressurizing Window	D-8	28.00	BL-112
BL-114	Pressurizing Window	D-8	10.85	BL-114
114B	UHF Triode Amplifier Oscillator	I-8	2.20	114B
BL-116	Pressurizing Window	D-8	28.00	BL-116
BL-119	Pressurizing Window	D-8	33.40	BL-119
BL-122	Pressurizing Window	D-8	28.00	BL-122
BL-123	Pressurizing Window	D-8	15.00	BL-123
F-123A	Triode Amplifier Oscillator	S-11	20.00	F-123A
BL-124	Pressurizing Window	D-8	50.00	BL-124
BL-125	Pressurizing Window	D-8	10.85	BL-125
126	Triode Amplifier	D-8	3.00	126
BL-126	Pressurizing Window	D-8	26.16	BL-126
127	Triode Detector Amplifier	D-8	2.00	127
BL-127	Pressurizing Window	D-8	***	BL-127
VT-127A	Triode UHF Oscillator	S-11	16.00	VT-127A
F-128A	Triode Amplifier Oscillator	S-11	184.00	F-128A
130	Triode Detector Amplifier	D-8	3.10	130
BL-132	Pressurizing Window	D-8	26.16	BL-132
BL-134	Pressurizing Window	D-8	***	BL-134
BL-136	Pressurizing Window	D-8	10.16	BL-136
VT-158	Triode Amplifier	O-11	350.00	VT-158
171A	Triode Amplifier	D-8	3.35	171A
180	Duodiode Rectifier	D-8	1.80	180
HF-200	Transmitting Triode	D-11	40.00	HF-200
200A	Full Wave Mercury Vapor Rectifier	D-11	7.75	200A
201A	Full Wave Mercury Vapor Rectifier	D-11	8.00	201A
202B	Half Wave Mercury Vapor Rectifier	D-11	35.00	202B
203	Half Wave Mercury Vapor Rectifier	D-11	11.60	203
205	Half Wave Mercury Vapor Rectifier	D-11	12.60	205
205B	Triode Amplifier Oscillator	D-8	25.00	205B
205D	Triode Amplifier Oscillator	S-8	30.00	
206	Half Wave Mercury Vapor Rectifier	D-11	10.00	206
207	Half Wave Mercury Vapor Rectifier	D-11	35.00	207
208	Triode Amplifier Oscillator	D-11	***	208
210	Triode Amplifier Oscillator	D-8	4.50	210
210A	Full Wave Mercury and Gas Rectifier	D-11	7.75	210A
211A	Full Wave Mercury and Gas Rectifier	D-11	8.00	211A
211D	Triode Amplifier Oscillator	S-11	20.00	211D
211/VT4C	Triode Amplifier Oscillator	S-4	13.45	211/VT4C

INDUSTRO TUBES

TYPE	DESCRIPTION	CODE	LIST	TYPE
213A	Half Wave Mercury Vapor Rectifier	D-11	7.50	213A
215A	AF and IF Amplifier	T-8	21.35	215A
218	Diode Rectifier	O-3	225.00	218
220	Half Wave High Vacuum Rectifier	D-11	7.72	220
220B	Triode Amplifier Oscillator	S-3	160.00	220B
221	Full Wave Zenon Filled Rectifier	D-11	19.00	221
221A	Diode Rectifier	O-8	11.00	221A
221B	Diode Vacuum Rectifier	O-8	12.00	221B
222	Full Wave Xenon Filled Rectifier	D-11	8.50	222
224	Full Wave Xenon Filled Rectifier	D-11	10.90	224
225	Half Wave Argon Filled Rectifier	D-11	6.00	225
226	Half Wave Argon Filled Rectifier	D-11	5.00	226
227A	UHF Triode Oscillator Amplifier	S-8	20.00	227A
230	Half Wave High Vacuum Rectifier	D-11	13.20	230
231	Triode Power Amplifier	D-8	3.60	231
231D	Triode Detector Amplifier	S-8	13.00	231D
232	Tetrode Amplifier	D-8	4.40	232
232B	Triode Amplifier Oscillator	D-11	125.00	232B
RX233A	Thyratron	S-8	4.50	RX233A
236	Tetrode Amplifier	D-8	3.85	236
243	Half Wave Mercury and Gas Rectifier	D-11	7.50	243
245	Triode Amplifier	D-8	3.05	245
247	Pentode Power Amplifier	D-8	3.65	247
249B	Diode Gas Rectifier	I-8	8.90	249B
249C	Diode Gas Rectifier	I-8	8.90	249C
250	Triode Amplifier	D-8	6.50	250
250R	High Vacuum Rectifier	S-8	20.00	250R
250TH	Triode Amplifier Oscillator	D-11	33.00	250TH
250TL	Triode Amplifier (Low)	D-11	33.00	250TL
251A	Triode Amplifier	C-6	300.00	251A
BL-253	Hydrogen Thyratron	D-8	50.00	BL-253
253A	Diode Gas Rectifier	C-8	15.30	253A
BL-254	Hydrogen Thyratron	D-8	40.00	BL-254
BL-255	Hydrogen Thyratron	D-8	32.00	BL-255
267B	Half Wave Mercury Rectifier	D-11	***	267B
268A	Triode	O-8	23.00	268A
271A	Moderate Power Triode Amplifier	S-8	25.75	271A
272	Mercury Thyratron	I-8	9.80	272
274	Duodiode Rectifier	D-8	3.75	274
274A	Full Wave - Vacuum Rectifier	D-11	5.50	274A
274B	Full Wave - Vacuum Rectifier	D-11	5.90	274B
276A	Triode Amplifier - Oscillator	N-8	33.20	276A
280	Duodiode Rectifier	D-8	1.80	280
285A	Pentode AF Amplifier	S-8	17.00	285A
286A	Pentode Amplifier Modulator	I-8	28.75	286A
HF-300	Transmitting Triode	D-11	35.00	HF-300
BL-301	Special Shutter Tube	D-8	125.00	BL-301
302	Mercury Vapor Rectifier	D-11	17.00	302
BL-302	TR and Shutter Tube	D-8	416.75	BL-302
303	Glass Filled Rectifier	D-11	13.25	303

INDUSTRO TUBES

TYPE	DESCRIPTION	CODE	LIST	TYPE
304	Mercury Vapor Rectifier	D-11	74.75	304
BL-304	TR and Shutter Tube	D-8	541.70	BL-304
304TH	Triode Power Amplifier	C-10	58.00	304TH
304TL	Triode Power Amplifier	C-10	58.00	304TL
305	Thyratron	D-11	***	305
BL-305	TR and Shutter Tube	D-8	***	BL-305
305A	Tetrode Power Amplifier	C-8	89.00	305A
305D	Triode Amplifier	S-8	3.90	305D
306	Thyratron	S-11	33.00	306
BL-306	TR and Shutter Tube	D-8	***	BL-306
307A	Pentode Amplifier	S-8	7.40	307A
309	Mercury Vapor Rectifier	D-11	7.90	309
310A	Pentode Amplifier	S-8	12.25	310A
311	Mercury and Gas Rectifier	D-11	15.75	311
311A	Pentode Amplifier	I-8	16.00	311A
BL-312	TR and Shutter Tube	D-8	189.00	BL-312
312A	Pentode Amplifier	S-8	22.00	312A
316A	UHF Triode Oscillator Amplifier	O-8	11.00	316A
318A	Diode Rectifier	O-3	225.00	318A
320	Mercury and Gas Rectifier	D-11	14.20	320
322	Mercury and Gas Rectifier	D-11	21.65	322
322A	Power Pentode	T-8	23.00	322A
323B	Mercury and Gas Rectifier	D-11	12.00	323B
327A	UHF Triode	C-8	20.00	327A
328A	Pentode Amplifier	D-8	7.75	328A
337A	Pentode Amplifier	D-8	14.00	337A
348A	Pentode Amplifier	D-8	7.15	348A
349A	Pentode Amplifier	S-8	8.25	349A
350B	Tetrode Amplifier	S-8	17.00	350B
357A	Triode Amplifier	O-8	70.00	357A
368AS	UHF Triode Amplifier Converter	S-8	10.00	368AS
371A	Diode Rectifier	C-8	11.00	371A
371B	High Voltage - Half Wave Rectifier	C-8	12.00	371B
373A	Pentode Amplifier	S-8	15.00	373A
374A	Pentode Amplifier	C-8	15.00	374A
378A	Diode Rectifier	U-8	16.65	378A
388A	UHF Triode Oscillator	S-8	17.40	388A
393A	Mercury and Gas Rectifier	S-11	15.75	393A
394A	Mercury and Gas Rectifier	D-11	7.50	394A
396A	Twin Triode	S-10	7.50	396A
398A	Power Pentode Amplifier	S-8	15.00	398A
399A	Grid Controlled Gas Rectifier	S-8	8.00	399A
403A	UHF Pentode Amplifier	S-8	3.60	403A
407A	Miniature Twin Triode	I-8	6.85	407A
408A	Miniature Pentode	D-8	6.00	408A
HT-415	Hydrogen Thyratron	D-8	140.00	HT-415
417A	Klystron	O-3	160.00	417A
434A	UHF Triode	O-3	125.00	434A
446A	UHF Triode Amplifier	C-8	18.15	446A
450TH	Triode Amplifier	D-11	80.00	450TH

INDUSTRO TUBES

TYPE	DESCRIPTION	CODE	LIST	TYPE
450TL	Triode Amplifier	D-11	80.00	450TL
464A	UHF Triode Amplifier	S-8	18.00	464A
471A	TR Tube	O-11	35.00	471A
481	Diode Rectifier	D-8	4.00	481
530	Triode Amplifier - Water Cooled	D-3	***	530
531	Diode Vacuum Rectifier	S-8	60.00	531
532	Diode Gas Switching Tube	C-8	14.00	532
532A	Diode Gas Switching Tube	D-8	16.00	532A
538	UHF Triode Oscillator Amplifier	C-8	16.00	538
553	Gas Phototube	D-11	5.50	553
559	UHF Diode Detector	S-8	5.00	559
HY-615	UHF Triode Amplifier Oscillator	S-8	2.00	HY-615
616	High Voltage Rectifier	C-3	210.00	616
623	Diode Gas Rectifier	D-11	12.00	623
627	Mercury Vapor Thyatron	D-6	22.00	627
631	Mercury Vapor Thyatron	D-11	46.00	631
631P1	Cold Cathode Neon Discharge Tube	D-11	13.75	631P1
648P1	Cold Cathode Neon Discharge Tube	D-11	30.00	648P1
700A	Magnetron	C-3	200.00	700A
700B	Magnetron	C-3	200.00	700B
700C	Magnetron	C-3	200.00	700C
700D	Magnetron	D-3	200.00	700D
701A	UHF Tetrode Amplifier	S-8	20.00	701A
702A	Gas Switching Tube	S-8	20.00	702A
702B	Gas Switching Tube	S-8	25.00	702B
703A	UHF Triode Amplifier Converter	S-8	10.00	703A
704A	Miniature UHF Diode Detector	S-8	6.80	704A
705A	Diode Vacuum Rectifier	O-8	16.65	705A
706AY	Magnetron	N-3	425.00	706AY
706BY	Magnetron	N-3	425.00	706BY
706CY	Magnetron	N-3	425.00	706CY
706DY	Magnetron	N-3	425.00	706DY
706EY	Magnetron	N-3	425.00	706EY
706FY	Magnetron	N-3	425.00	706FY
706GY	Magnetron	N-3	425.00	706GY
707A	Klystron	S-3	54.00	707A
707B	Klystron	S-3	65.00	707B
708A	UHF Triode Amplifier Converter	S-8	12.00	708A
709A	Gas Switching Tube	S-8	20.00	709A
713A	Pentode Amplifier	C-8	8.00	713A
715	Mercury Vapor Thyatron	I-8	8.40	715
715A	Pulse Modulator Tetrode	C-6	48.00	715A
715B	Pulse Modulator Tetrode	C-6	60.00	715B
715C	Pulse Modulator Tetrode	S-6	78.55	715C
717A	Pentode Amplifier Oscillator	S-8	8.00	717A
718BY	Magnetron	C-3	200.00	718BY
718CY	Magnetron	C-3	200.00	718CY
718EY	Magnetron	C-3	200.00	718EY
719A	Special Purpose Diode Rectifier	S-11	52.50	719A
720AY	Magnetron	D-3	450.00	720AY

INDUSTRO TUBES

TYPE	DESCRIPTION	CODE	LIST	TYPE
720BY	Magnetron	S-3	450.00	720BY
720CY	Magnetron	S-3	450.00	720CY
720DY	Magnetron	S-3	450.00	720DY
720EY	Magnetron	S-3	475.00	720EY
721B	TR, Glass Envelope, Fixed-Tuned	D-8	27.50	721B
722A	Thyratron	S-8	17.00	722A
723A/B	Klystron	S-3	35.00	723A/B
724B	TR, Glass Envelope, Fixed-Tuned	D-8	25.00	724B
725A	Magnetron	S-3	120.00	725A
730A	Magnetron	C-3	140.00	730A
732A	Diode Vacuum Rectifier	D-8	10.00	732A
750TL	Triode Amplifier	S-10	125.00	750TL
800	Power Triode	C-8	9.90	800
801	Power Triode	S-8	3.60	801
801A	Power Triode	S-8	3.90	801A
802	Transmitting Pentode Amplifier Oscillator	D-8	5.00	802
803	Power Pentode	O-4	23.00	803
804	Power Pentode	D-8	***	804
805	Power Triode	S-8	13.50	805
807	Beam Power Amplifier	D-8	2.50	807
807W	Ruggedized Version 807	S-8	12.85	807W
808	Power Triode	S-8	12.85	808
809	Power Triode	D-8	5.00	809
810	Power Triode	D-8	18.00	810
811	High Mu Transmitting Triode	D-8	4.70	811
811A	Power Triode	D-8	4.80	811A
812	Low Mu Transmitting Triode	D-8	4.80	812
812A	Power Triode	D-8	4.90	812A
813	Beam Power Amplifier	D-8	18.00	813
814	Beam Power Amplifier	I-8	12.00	814
815	Beam Power Amplifier, Twin Type	S-8	8.50	815
816	Mercury - Vapor Rectifier	D-8	2.00	816
826	UHF Power Triode	C-8	11.00	826
828	Beam Power Amplifier	D-8	17.00	828
829A	Beam Power Amplifier	D-8	16.00	829A
829B	VHF Beam Power Amplifier	D-8	18.00	829B
830B	Power Triode	S-8	10.50	830B
832	VHF Beam Power Amplifier	D-8	12.70	832
832A	VHF Beam Power Amplifier	I-8	14.00	832A
833A	Power Triode	D-4	52.00	833A
836	Vacuum Rectifier	S-8	9.00	836
837	Power Pentode	S-8	5.80	837
838	Power Triode	S-8	13.00	838
841	Power Triode	S-8	4.35	841
843	Power Triode	I-8	2.60	843
845	Power Triode	D-8	16.00	845
849	Power Triode	S-4	120.00	849
851	Power Triode	C-4	299.00	851
852	Triode Amplifier	D-11	25.00	852

INDUSTRO TUBES

TYPE	DESCRIPTION	CODE	LIST	TYPE
860	Power Tetrode	C-4	33.00	860
861	Power Tetrode	C-3	170.00	861
864	Triode Amplifier	S-8	3.75	864
865	Power Tetrode	S-8	8.75	865
866A	Mercury Half Wave Rectifier	D-8	2.20	866A
866JR	Half Wave Mercury Rectifier	D-11	2.00	866JR
869B	Mercury - Vapor Rectifier	S-4	130.00	869B
872A	Half Wave Mercury Vapor Rectifier	S-8	7.50	872A
873	Mercury Thyatron	D-11	18.90	873
874	Diode Voltage Regulator	D-8	3.10	874
876	Ballast Tube	I-8	5.25	876
878	Vacuum Rectifier	S-8	11.00	878
879	Diode Vacuum Rectifier	S-8	1.70	879
884	Argon Thyatron	D-11	1.85	884
885	Argon Thyatron	D-11	2.00	885
918	Gas Phototube, Red-Sensitive Type	D-8	3.10	918
919	Vacuum Phototube, Red-Sensitive Type	D-8	4.00	919
927	Gas Phototube, Red-Sensitive Type	D-8	2.50	927
930	Gas Phototube, Red-Sensitive Type	D-8	2.40	930
931A	Multiplier Phototube, General-Purpose Type	D-8	8.60	931A
934	Vacuum Phototube, Blue-Sensitive Type	D-8	5.00	934
954	Acorn Type Pentode	C-8	6.75	954
955	Acorn Type Triode	C-8	3.50	955
956	Acorn Type Pentode	C-8	5.95	956
957	Acorn Type Triode	C-8	4.00	957
958A	Acorn Type Triode	C-8	6.50	958A
959	Acorn Type Pentode	S-8	7.20	959
973	Mercury Thyatron	D-11	18.90	873
CK-1003	Duodiode Gaseous Rectifier	D-11	1.30	CK-1003
CK-1005	Duodiode Gas Rectifier	I-11	1.50	CK-1005
CK-1006	Duodiode Gas Rectifier	D-11	5.85	CK-1006
CK-1013	Cold Cathode Gas Rectifier	D-11	3.40	CK-1013
E-1148	Transmitting Triode	I-8	2.25	E-1148
1201	UHF Triode Amplifier	S-8	2.40	1201
1203A	UHF Diode Detector	S-8	3.20	1203A
VC-1257	Hydrogen Thyatron	D-11	2700.00	VC-1257
VC-1258	Hydrogen Thyatron	D-8	22.90	VC-1258
1291	UHF Twin Triode Amplifier	S-8	4.80	1291
1294	UHF Diode Detector Rectifier	S-8	3.20	1294
1299	UHF Pentode Amplifier	S-8	4.40	1299
1603	Low Microphonic Triple Grid Pentode	S-8	7.20	1603
1611	Receiving Pentode Amplifier	D-8	4.00	1611
1612	Receiving Pentagrid Amplifier	S-8	3.00	1612
1613	Transmitting Pentode Amplifier	I-8	2.45	1613
1616	Vacuum Rectifier	O-8	8.45	1616
1619	Transmitting Pentode Amplifier	O-8	2.40	1619
1620	Triple Grid Amplifier Detector	S-8	6.20	1620
1622	Receiving Tetrode Amplifier	D-8	2.50	1622

INDUSTRO TUBES

TYPE	DESCRIPTION	CODE	LIST	TYPE
1624	Beam Power Amplifier	D-8	4.00	1624
1625	Beam Power Amplifier	O-8	2.45	1625
1626	Triode Amplifier	C-8	1.80	1626
1629	Magic Eye Tuning Indicator	S-8	1.33	1629
1630	Orbital Beam Hexode UHF Amplifier	S-8	3.00	1630
1632	12.6 Volt Heater Version of 25L6	S-8	3.20	1632
1633	25 Volt Heater Version of 6SN7GT	I-8	1.90	1633
1636	UHF Beam Deflection Heptode Amplifier	S-8	6.00	1636
1637	Pentode Output Amplifier	S-8	4.00	1637
1641	Duodiode Vacuum Rectifier	D-11	6.50	1641
1642	Twin Triode	S-8	2.05	1642
1654	Miniature Diode Vacuum Rectifier	D-8	5.90	1654
1655	Selected 6SC7 - Matched Sections	S-8	4.00	1655
1665	Special Type 2050	S-8	3.75	1665
1701	Mercury Thyatron	I-11	8.40	1701
1754	Hydrogen Thyatron	D-11	825.00	1754
1851	Pentode Amplifier	S-8	3.65	1851
1861	Diode Rectifier	C-3	225.00	1861
1907	Hydrogen Thyatron	D-11	240.00	1907
2050	Xenon Shield Grid Thyatron	D-8	1.85	2050
2050W	2050 Ruggedized Tube	I-11	6.50	2050W
2051	Thyatron	S-8	2.05	2051
R4410	Diode Gas Discharge Tube	D-11	60.00	R4410
5517	Cold Cathode Gas Rectifier	D-11	3.40	5517
5528	Thyatron	D-11	36.00	5528
5557	Mercury - Vapor Thyatron	D-11	8.40	5557
5558	Mercury - Vapor Rectifier	S-8	12.00	5558
5559	Mercury - Vapor Thyatron	D-11	21.00	5559
5603	Power Pentode Amplifier	C-8	15.00	5603
5610	Miniature Triode	D-11	2.25	5610
5625	High Voltage Rectifier	C-3	210.00	5625
5632	Thyatron	D-3	15.00	5632
5642	Subminiature High Voltage Rectifier	S-8	3.00	5642
5651WA	Ruggedized 5651	S-11	3.68	5651WA
5654	Reliable Miniature Pentode	S-8	3.45	5654
5662	Miniature Inert Gas Thyatron	I-8	3.20	5662
5663	Miniature Thyatron	I-8	1.90	5663
5665	Thyatron	D-8	70.00	5665
5670	Twin Triode	I-8	4.75	5670
5684	Improved 5632	D-11	18.00	5684
5685	Improved C6J	D-11	36.00	5685
5687	Miniature Twin Triode	D-8	4.40	5687
5695	Half Wave Gas Rectifier	I-8	4.00	5695
5718	Subminiature Triode	S-8	5.85	5718
5719	Subminiature Triode	S-8	5.85	5719
5725	Ruggedized 6AS6	D-8	***	5725
5726	Ruggedized 6AL5	D-8	1.75	5726
5789	Packaged Pulsed Magnetron	D-3	1405.00	5789
5792	ATR, Fixed-Tuned	D-8	37.50	5792
5793	ATR, Fixed-Tuned	D-8	37.50	5793

INDUSTRO TUBES

TYPE	DESCRIPTION	CODE	LIST	TYPE
5814	Miniature Twin Triode	I-8	3.00	5814
5839	Full Wave Rectifier	D-11	18.00	5839
5840	Subminiature Pentode	D-8	8.75	5840
5842	Miniature Triode	D-11	20.00	5842
5852	Full Wave Rectifier	D-11	16.00	5852
5853	TR - Band Pass, Fixed-Tuned	D-8	122.35	5853
5863	TR - Band Pass	D-11	77.00	5863
5864	ATR - Fixed-Tuned	D-8	28.00	5864
5865	TR - Band Pass, Fixed-Tuned	D-8	212.50	5865
5883	ATR - Fixed-Tuned	D-8	14.75	5883
5892	Gas Rectifier	D-11	14.00	5892
5921	ATR - Fixed-Tuned	D-8	35.00	5921
5922	ATR - Fixed-Tuned	D-8	35.00	5922
5925	TR - Band Pass - Fixed Tune	D-8	350.00	5925
5927	TR - Band Pass, Tixed-Tuned	D-8	128.30	5927
5933	Ruggedized 807	S-8	12.85	5933
5939A	Gas Switching Window	D-8	41.75	5939A
5948/1754	Hydrogen Thyatron	D-11	825.00	5948/1754
5949/1907	Hydrogen Thyatron	D-11	240.00	5949/1907
5956/E36	Hydrogen Thyatron	D-11	83.00	5956/E36
5957/E37	Hydrogen Thyatron	D-8	51.50	5957/E37
5958/E40	Hydrogen Thyatron	D-11	78.00	5958/E40
5959/E41	Hydrogen Thyatron	D-8	51.50	5959/E41
5960	Cold Cathode Discharge	D-11	83.00	5960
5962	Voltage Regulator	D-11	16.75	5962
5964	Miniature Twin Triode	D-8	1.45	5964
5992	Beam Power Amplifier	D-11	22.00	5992
5993	Miniature Full Wave Rectifier	D-11	16.50	5993
6005	Ruggedized 6AQ5	S-11	3.40	6005
6014	Thyatron	D-11	16.00	6014
6015	Hot Cathode Gas Rectifier	D-11	18.00	6015
6021	Quality Version of 6BF7	D-8	8.95	6021
6022	ATR - Fixed-Tuned	D-8	54.20	6022
6024	ATR - Fixed-Tuned	D-8	36.90	6024
6027	Packaged Magnetron	D-3	281.00	6027
6028	Miniature Pentode	D-8	8.00	6028
6033	ATR - Version 1B35A	D-8	14.00	6033
6034	ATR - Version 1B37A	D-8	14.00	6034
6035	TR - Band Pass, Fixed-Tuned	D-8	62.50	6035
6044	Thyatron	D-11	46.00	6044
6081	ATR - Fixed-Tuned	D-8	58.30	6081
6094	Beam Power Amplifier	D-11	35.70	6094
6095	Improved 6005	S-8	6.50	6095
6096	Improved 5654	S-8	4.95	6096
6097	Improved 5726	D-8	2.00	6097
6099	Improved 6J6W (Balanced)	S-8	7.50	6099
6101	Improved 6J6W	S-8	4.00	6101
6106	Full Wave High Vacuum Rectifier	D-11	16.25	6106
6117	TR - Band Pass, Fixed-Tuned	D-8	119.00	6117
6130	Hydrogen Thyatron	D-8	15.00	6130

INDUSTRO TUBES

TYPE	DESCRIPTION	CODE	LIST	TYPE
6142	Voltage Regulator	D-11	8.35	6142
6144	Temperature Limited Noise Diode	D-11	159.75	6144
6163	ATR Tube	D-11	38.95	6163
6164	TR Tube	D-11	102.50	6164
6232	TR - Version 1B63A	D-8	78.00	6232
6271	Magnetron	D-3	250.00	6271
6272	Magnetron	D-3	312.00	6272
6273	Magnetron	D-3	312.00	6273
6274	Magnetron	D-3	312.00	6274
6275	Magnetron	D-3	312.00	6275
6278	Thyratron	D-11	42.00	6278
6282	TR - Band Pass, Fixed-Tuned	D-8	183.40	6282
6291	Multiplier Phototube	D-10	91.50	6291
6292	Multiplier Phototube	D-10	91.50	6292
6322	TR - Cell Type, Two Disc, Tunable	D-8	50.00	6322
6334	TR - Dual 1B63A	D-11	196.00	6334
6356	Gas Noise Source	D-11	30.00	6356
6357	Gas Noise Source	D-11	30.00	6357
6358	Gas Noise Source	D-11	30.00	6358
6359	Gas Noise Source	D-11	39.75	6359
6361	Convectron	D-11	25.75	6361
6369	ATR - Miniature 1B37A	D	38.95	6369
6385	Twin Triode	D-11	14.69	6385
6393	ATR Tube - Miniature 1B35A	D-8	22.00	6393
6396	ATR Tube	D-8	23.00	6396
7193	UHF Triode Amplifier	S-8	1.60	7193
8001	Transmitting Pentode	D-11	30.00	8001
8002R	Transmitting Power Triode	S-3	190.00	8002R
8008	Mercury - Vapor Rectifier	D-8	7.70	8008
8011	UHF Triode Oscillator Amplifier	C-8	16.00	8011
8012	UHF Triode Amplifier Oscillator	C-8	13.00	8012
8013A	Vacuum Rectifier	S-8	10.15	8013A
8016	Diode Vacuum Rectifier	S-8	4.00	8016
8019	UHF Triode Amplifier	S-8	9.90	8019
8020	Vacuum Rectifier	C-4	12.25	8020
8023	UHF Triode Amplifier	S-8	16.00	8023
8025	UHF Power Triode	I-8	11.30	8025
9001	UHF Sharp-Cutoff Pentode, Miniature	S-8	3.75	9001
9002	UHF Oscillator Triode, Miniature	S-8	2.70	9002
9003	UHF Remote-Cutoff Pentode, Miniature	S-8	3.70	9003
9004	UHF Diode, Acorn	S-8	2.60	9004
9005	UHF Diode, Acorn	I-8	4.05	9005
9006	UHF Diode, Miniature	S-8	1.90	9006
1CP1	Cathode Ray Tube	D-10	16.00	1CP1
3DP1	Cathode Ray Tube	I-10	17.00	3DP1
3EP1	Cathode Ray Tube	S-10	18.00	3EP1
3FP7	Cathode Ray Tube	S-4	20.00	3FP7
3GP1	Cathode Ray Tube	S-10	28.00	3GP1
3HP7	Cathode Ray Tube	S-10	19.00	3HP7
3JP1	Cathode Ray Tube	D-4	20.50	3JP1

INDUSTRO TUBES

TYPE	DESCRIPTION	CODE	LIST	TYPE
3JP2	Cathode Ray Tube	D-10	22.00	3JP2
3JP7	Cathode Ray Tube	D-4	22.00	3JP7
3JP11	Cathode Ray Tube	D-10	29.75	3JP11
3JP12	Cathode Ray Tube	I-10	29.00	3JP12
3MP1	Cathode Ray Tube	D-4	22.00	3MP1
3MP2	Cathode Ray Tube	D-10	25.00	3MP2
3MP7	Cathode Ray Tube	D-10	25.00	3MP7
3MP11	Cathode Ray Tube	D-10	25.00	3MP11
3NP4	Projection Tube	D-10	22.00	3NP4
3RP1	Cathode Ray Tube	D-4	16.00	3RP1
3RP1-A	Cathode Ray Tube	D-10	26.49	3RP1-A
3RP2	Cathode Ray Tube	D-10	23.00	3RP2
3RP7	Cathode Ray Tube	D-10	23.00	3RP7
3RP11	Cathode Ray Tube	D-10	23.00	3RP11
3RP11-A	Cathode Ray Tube	D-10	29.57	3RP11-A
3SP1	Cathode Ray Tube	D-10	24.75	3SP1
3SP2	Cathode Ray Tube	D-10	28.50	3SP2
3SP7	Cathode Ray Tube	D-10	28.50	3SP7
3SP11	Cathode Ray Tube	D-10	28.50	3SP11
3WP1	Cathode Ray Tube	D-10	42.00	3WP1
3WP11	Cathode Ray Tube	D-10	44.74	3WP11
3ABP1	Two Gun CRT	D-10	208.33	3ABP1
3ABP2	Cathode Ray Tube	D-10	208.33	3ABP2
3ABP7	Cathode Ray Tube	D-10	211.66	3ABP7
3ABP11	Cathode Ray Tube	D-10	208.33	3ABP11
3ACP1	Cathode Ray Tube	D-10	58.33	3ACP1
3ACP2	Cathode Ray Tube	D-10	58.33	3ACP2
3ACP7	Cathode Ray Tube	D-10	61.66	3ACP7
3ACP11	Cathode Ray Tube	D-10	58.33	3ACP11
3U3P1	Three Gun CRT	D-4	440.00	3U3P1
4AP10	Cathode Ray Tube	S-10	20.00	4AP10
5ADP1	Cathode Ray Tube	D-10	51.66	5ADP1
5ADP2	Cathode Ray Tube	D-10	60.82	5ADP2
5ADP7	Cathode Ray Tube	D-10	64.16	5ADP7
5ADP11	Cathode Ray Tube	D-10	56.24	5ADP11
5AFP1	Cathode Ray Tube	D-10	250.00	5AFP1
5AFP2	Cathode Ray Tube	D-10	250.00	5AFP2
5AFP7	Cathode Ray Tube	D-10	253.33	5AFP7
5AFP11	Cathode Ray Tube	D-10	250.00	5AFP11
5AHP7	Cathode Ray Tube	D-10	61.66	5AHP7
5AHP7-M	Cathode Ray Tube	D-10	78.33	5AHP7-M
5AMP1	Cathode Ray Tube	D-10	66.66	5AMP1
5AMP2	Cathode Ray Tube	D-10	75.82	5AMP2
5AMP7	Cathode Ray Tube	D-10	79.16	5AMP7
5AMP11	Cathode Ray Tube	D-10	71.25	5AMP11
5AQP1	Cathode Ray Tube	D-10	58.33	5AQP1
5AQP2	Cathode Ray Tube	D-10	67.49	5AQP2
5AQP7	Cathode Ray Tube	D-10	70.82	5AQP7
5AQP11	Cathode Ray Tube	D-10	62.92	5AQP11
5BP1	Cathode Ray Tube	S-4	18.00	5BP1

INDUSTRO TUBES

TYPE	DESCRIPTION	CODE	LIST	TYPE
5BP2-A	Cathode Ray Tube	S-3	46.00	5BP2-A
5BP4	Cathode Ray Tube	S-3	18.00	5BP4
5BP11-A	Cathode Ray Tube	D-10	45.84	5BP11-A
5CP1	Cathode Ray Tube	C-4	20.00	5CP1
5CP1-A	Cathode Ray Tube	D-4	32.00	5CP1-A
5CP2-A	Cathode Ray Tube	D-10	67.33	5CP2-A
5FP7	Cathode Ray Tube	S-10	24.00	5FP7
5FP14	Cathode Ray Tube	S-10	30.00	5FP14
5GP1	Cathode Ray Tube	S-10	28.00	5GP1
5HP1A	Cathode Ray Tube	D-10	49.00	5HP1A
5JP1	Cathode Ray Tube	D-10	98.00	5JP1
5JP1-A	Cathode Ray Tube	D-10	112.51	5JP1-A
5JP2-A	Cathode Ray Tube	D-10	121.67	5JP2-A
5JP7-A	Cathode Ray Tube	D-10	125.00	5JP7-A
5JP11-A	Cathode Ray Tube	D-10	117.08	5JP11-A
5LP1	Cathode Ray Tube	I-3	56.00	5LP1
5LP1-A	Cathode Ray Tube	D-10	65.84	5LP1-A
5LP2-A	Cathode Ray Tube	D-10	75.00	5LP2-A
5LP7-A	Cathode Ray Tube	D-10	78.33	5LP7-A
5LP11-A	Cathode Ray Tube	D-10	70.41	5LP11-A
5RP1-A	Cathode Ray Tube	D-10	208.33	5RP1-A
5RP2-A	Cathode Ray Tube	D-10	208.33	5RP2-A
5RP7-A	Cathode Ray Tube	D-10	212.51	5RP7-A
5RP11-A	Cathode Ray Tube	D-10	208.33	5RP11-A
5SP1	Two Gun CRT	D-10	231.00	5SP1
5SP1-A	Cathode Ray Tube	D-10	250.00	5SP1-A
5SP2-A	Cathode Ray Tube	D-10	250.00	5SP2-A
5SP7-A	Cathode Ray Tube	D-10	254.17	5SP7-A
5SP11-A	Cathode Ray Tube	D-10	250.00	5SP11-A
5XP1-A	Cathode Ray Tube	D-10	267.11	5XP1-A
5XP1-AM	Cathode Ray Tube	D-10	260.00	5XP1-AM
5XP2-A	Cathode Ray Tube	D-10	267.11	5XP2-A
5XP2-AM	Cathode Ray Tube	D-10	243.75	5XP2-AM
5XP7-A	Cathode Ray Tube	D-10	231.25	5XP7-A
5XP11-A	Cathode Ray Tube	D-10	267.11	5XP11-A
5XP11-AM	Cathode Ray Tube	D-10	243.75	5XP11-AM
5X2P1	Two Gun CRT	D-4	250.00	5X2P1
5YP1	Cathode Ray Tube	D-10	87.51	5YP1
5YP2	Cathode Ray Tube	D-10	96.67	5YP2
5YP7	Cathode Ray Tube	D-10	100.00	5YP7
5YP11	Cathode Ray Tube	D-10	92.08	5YP11
5Z3P1	Three Gun CRT	D-4	460.00	5Z3P1
7ABP7	Cathode Ray Tube	D-10	74.59	7ABP7
7ABP7-M	Cathode Ray Tube	D-10	97.92	7ABP7-M
7BP7	Cathode Ray Tube	S-10	30.00	7BP7
7CP1	Cathode Ray Tube	D-10	30.75	7CP1
7XP1	Five Gun CRT	D-4	666.67	7XP1
7YP1	Five Gun CRT	D-10	676.67	7YP1
7YP2	Cathode Ray Tube	D-10	683.33	7YP2
7YP7	Cathode Ray Tube	D-10	683.33	7YP7

INDUSTRO TUBES

TYPE	DESCRIPTION	CODE	LIST	TYPE
7YP11	Cathode Ray Tube	D-10	683.33	7YP11
7Z8P1	Eight Gun CRT	D-4	1700.00	7Z8P1
9GP7	Cathode Ray Tube	S-10	50.00	9GP7
9JP1	Cathode Ray Tube	S-10	50.00	9JP1
9LP7	Cathode Ray Tube	S-10	48.00	9LP7
9MP7	Cathode Ray Tube	S-10	52.00	9MP7
9Z5P1	Five Gun CRT	D-4	900.00	9Z5P1
9Z6P1	Six Gun CRT	D-4	1175.00	9Z6P1
9Z8P1	Eight Gun CRT	D-4	1750.00	9Z8P1
10WP7	Cathode Ray Tube	D-10	98.33	10WP7
10WP7-M	Cathode Ray Tube	D-10	131.67	10WP7-M
12DP7	Cathode Ray Tube	D-10	60.00	12DP7
12Z2P1	Cathode Ray Tube	D-4	500.00	12Z2P1
12Z10P1	Ten Gun CRT	D-4	2058.33	12Z10P1
51UCP1	CRT	D-4	250.00	51UCP1
52HAP1-A	Two Gun CRT	D-4	326.67	52HAP1-A
52HUP1	Two Gun CRT	D-4	625.00	52HUP1
52REP1	Two Gun CRT	D-4	291.67	52REP1
53RAP1	Three Gun CRT	D-4	500.00	53RAP1
53WHP1	Three Gun CRT	D-4	491.67	53WHP1
54DGP1	Four Gun CRT	D-4	658.33	54DGP1
54NCP1	Four Gun CRT	D-4	875.00	54NCP1
54SWP1	Four Gun CRT	D-4	658.33	54SWP1
55JGP1-A	Five Gun CRT	D-10	866.67	55JGP1-A
72RAP1	Two Gun CRT	D-10	308.33	72RAP1
72NBP1	Two Gun CRT	D-10	383.33	72NBP1
73RAP1	Three Gun CRT	D-10	508.33	73RAP1
74RAP1	Four Gun CRT	D-10	700.00	74RAP1
76RAP1	Six Gun CRT	D-10	1150.00	76RAP1
92GEP1	Two Gun CRT	D-10	500.00	92GEP1
CE-1-C	Phototube	D-11	4.10	CE-1-C
CE-1-D	Phototube	D-11	2.50	CE-1-D
CE-1V-C	Phototube	D-11	4.20	CE-1V-C
CE-1V-D	Phototube	D-11	2.60	CE-1V-D
CE-2-C	Phototube	D-11	5.50	CE-2-C
CE-2-D	Phototube	D-11	3.65	CE-2-D
CE-2V-C	Phototube	D-11	6.00	CE-2V-C
CE-2V-D	Phototube	D-11	3.30	CE-2V-D
CE-3-C	Phototube	D-11	5.50	CE-3-C
CE-3-D	Phototube	D-11	3.30	CE-3-D
CE-4-C	Phototube	D-11	5.50	CE-4-C
CE-4-D	Phototube	D-11	3.30	CE-4-D
CE-4V-C	Phototube	D-11	6.00	CE-4V-C
CE-4V-D	Phototube	D-11	3.65	CE-4V-D
CE-7-C	Phototube	D-11	6.00	CE-7-C
CE-7-D	Phototube	D-11	3.30	CE-7-D
CE-18-C	Phototube	D-11	12.00	CE-18-C
CE-18-D	Phototube	D-11	7.00	CE-18-D
CE-21-C	Phototube	D-11	5.60	CE-21-C
CE-21-D	Phototube	D-11	3.60	CE-21-D

INDUSTRO TUBES

TYPE	DESCRIPTION	CODE	LIST	TYPE
CE-22-C	Phototube	D-11	4.00	CE-22-C
CE-22-D	Phototube	D-11	2.40	CE-22-D
CE-25-C	Phototube	D-11	5.50	CE-25-C
CE-25-D	Phototube	D-11	2.50	CE-25-D
CE-B25-C	Phototube	D-11	5.50	CE-B25-C
CE-B25-D	Phototube	D-11	2.50	CE-B25-D
CE-25V-C	Phototube	D-11	5.50	CE-25V-C
CE-25V-D	Phototube	D-11	3.00	CE-25V-D
CE-26-C	Phototube	D-11	5.50	CE-26-C
CE-26-D	Phototube	D-11	3.30	CE-26-D
CE-29-R	Phototube	D-11	2.80	CE-29-R
CE-30-C	Phototube	D-11	2.60	CE-30-C
CE-30-D	Phototube	D-11	1.50	CE-30-D
CE-30V-C	Phototube	D-11	2.80	CE-30V-C
CE-30V-D	Phototube	D-11	1.85	CE-30V-D
CE-31V-C	Phototube	D-11	5.00	CE-31V-C
CE-31V-D	Phototube	D-11	3.00	CE-31V-D
CE-34-R	Phototube	D-11	4.50	CE-34-R
CE-36-C	Phototube	D-11	5.50	CE-36-C
CE-36-D	Phototube	D-11	2.50	CE-36-D
CE-59-R	Phototube	D-11	4.40	CE-59-R
CE-61-R	Phototube	D-11	6.60	CE-61-R
CE-64-R	Phototube	D-11	3.60	CE-64-R
CE-73-R	Phototube	D-11	4.30	CE-73-R
CE-74-R	Phototube	D-11	6.50	CE-74-R
CE-76-R	Phototube	D-11	4.50	CE-76-R
CE-83-R	Phototube	D-11	10.00	CE-83-R
CE-91-R	Phototube	D-11	3.30	CE-91-R
CE-97-R	Phototube	D-11	10.00	CE-97-R
CE-99-R	Phototube	D-11	6.50	CE-99-R

ADJUSTMENT HANDLING

All INDUSTRO tubes are sold by INDUSTRO, Inc. under terms and conditions of sale which provide a warranty against defects in workmanship, materials, and construction. Since such defects are not always discernible at the time of manufacture, adjustment methods have been established to assure equitable adjustment consideration for tubes found to be defective after shipment by INDUSTRO, Inc.

The adjustment periods stated herein represent reasonable time allowances for the appearance of latent defects and should not be construed as indications of tube life since, under normal operating conditions, average life expectancies exceed adjustment periods.

The date of shipment by INDUSTRO, Inc. as referred to below, will be determined from the date code (RETMA standard) applied to the tube at the time of shipment.

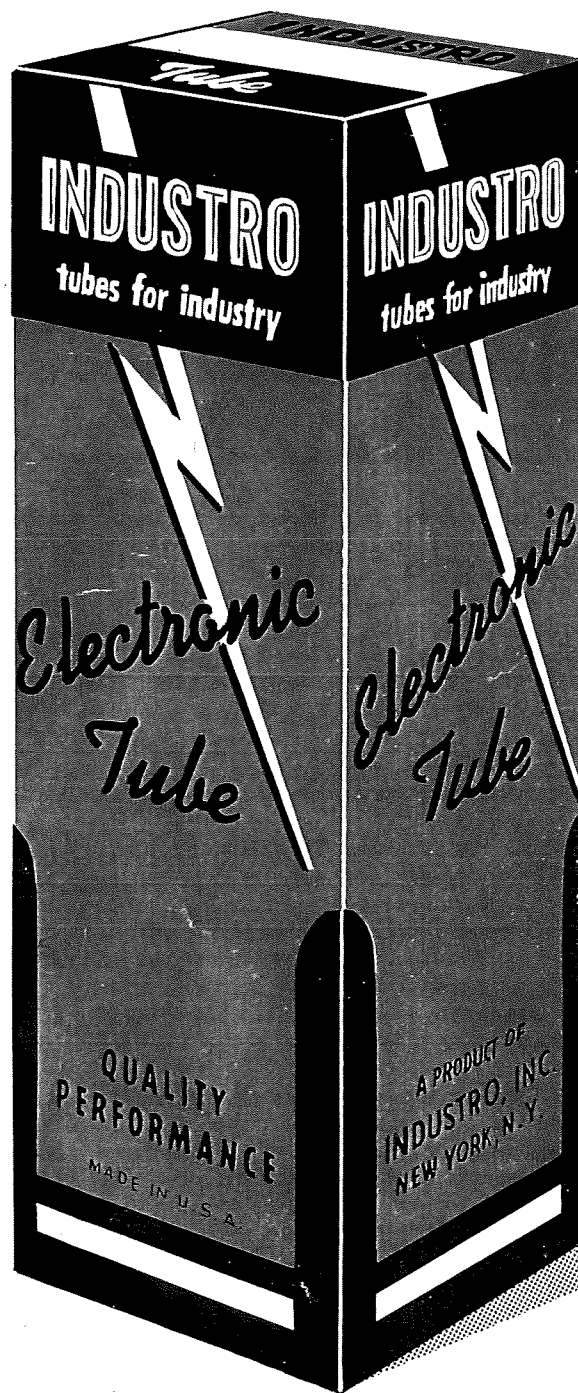
Adjustments for INDUSTRO tubes which do not meet our warranty and which otherwise qualify for adjustment will be made as follows:

1. -- Full adjustment will be made for failures within 15 hours of service. For failures after 15 hours of service, pro rata adjustment will be made based upon the difference between the hours of service at failure and 350 hours. No adjustment will be allowed if service exceeds 350 hours. Hours of service is total hours that power is applied to filament or heater. Adjustment period expires one year from date tube was first placed in service or 18 months from date tube was shipped by INDUSTRO, Inc., whichever occurs first.
2. -- Full adjustment will be made for failures within 15 hours of service. For failures after 15 hours of service, pro rata adjustment will be made based upon the difference between the hours of service at failure and 250 hours. No adjustment will be allowed if service exceeds 250 hours. Hours of service is total hours that power is applied to filament or heater. Adjustment period expires one year from date tube was first placed in service or 18 months from date tube was shipped, whichever occurs first.
3. -- Full adjustment will be made for failures within 50 hours of service. For failures after 50 hours of service, pro rata adjustment will be made based upon the difference between the hours of service at failure and 500 hours. No adjustment will be allowed if service exceeds 500 hours. Hours of service is total hours that power is applied to filament or heater. Adjustment period expires one year from date tube was first placed in service or 18 months from date tube was shipped, whichever occurs first.
4. -- Full adjustment will be made for failures within 50 hours of service. For failures after 50 hours of service, pro rata adjustment will be made based upon the difference between the hours of service at failure and 1,000 hours. No adjustment will be allowed if service exceeds 1,000 hours. Adjustment period expires one year from date tube was first placed in service or 18 months from date tube was shipped, whichever occurs first.
5. -- Full adjustment will be made for failures within 10,000 hours of service. No adjustment will be allowed if service exceeds 10,000 hours. Adjustment period expires 2 years from date tube was first placed in service or 30 months from date tube was shipped, whichever occurs first.
6. -- Pro rata adjustment will be made for the difference between the months of service at failure and twelve months. Months of service is elapsed number of full months from date tube is first placed in service until failure. Adjustment period expires one year from date tube was first placed in service or 2 years from date tube was shipped, whichever occurs first.
7. -- Pro rata adjustment will be made for the difference between the months of service at failure and 24 months. Months of service is elapsed number of full months from date tube is first placed in service until failure. Adjustment period expires 2 years from date tube was first placed in service or 3½ years from date tube was shipped, whichever occurs first.
8. -- Full adjustment will be made if reasonable service has not been realized and tube fails within 12 months from date of shipment. No adjustment will be allowed if reasonable service has been realized or if failure occurs after this adjustment period has expired.
9. -- Full adjustment will be made for failures within 15 hours of service. For failures after 15 hours of service, pro rata adjustment will be made based upon the difference between the hours of service at failure and 50 hours. No adjustment will be allowed if service exceeds 50 hours. Hours of service is total hours that power is applied to filament or heater. Adjustment period expires 6 months from date tube was first placed in service or one year from date tube was shipped, whichever occurs first.
10. -- Full adjustment will be made for failures within 50 hours of service. For failures after 50 hours of service, pro rata adjustment will be made based upon the difference between the hours of service at failure and 1,000 hours. No adjustment will be allowed if service exceeds 1,000 hours. Adjustment period expires 6 months from date tube was first placed in service or one year from date tube was shipped, whichever occurs first.
11. -- Full adjustment will be made if reasonable service has not been realized and tube fails within 90 days from date of shipment. No adjustment will be allowed if reasonable service has been realized or if failure occurs after this adjustment period has expired.

IMPORTANT: Adjustment is allowable under our warranty only if:

1. Claim is presented to INDUSTRO, Inc., promptly after tube is found to be defective and no later than one month after the expiration of the adjustment period applicable to that tube.
2. Tube is returned in accordance with instructions issued by INDUSTRO, Inc. (Return is not to be made until authorized). Charges for return transportation costs prepaid by the customer will be accepted by INDUSTRO if adjustment is subsequently allowed.
3. Tube has not been subjected to abuse, improper installation or application, alteration, accident, or negligence in use, storage, transportation, or handling.
4. Original tube identification markings have not been removed, defaced, or altered.
5. INDUSTRO inspection and test reveals that tube does not meet our warranty.

SPECIAL PURPOSE ELECTRON TUBES



D I S T R I B U T E D B Y